

AIRPORT DIAGRAM

ATLANTA/ HARTSFIELD - JACKSON ATLANTA INTL (ATL)
AL-26 (FAA) ATLANTA, GEORGIA

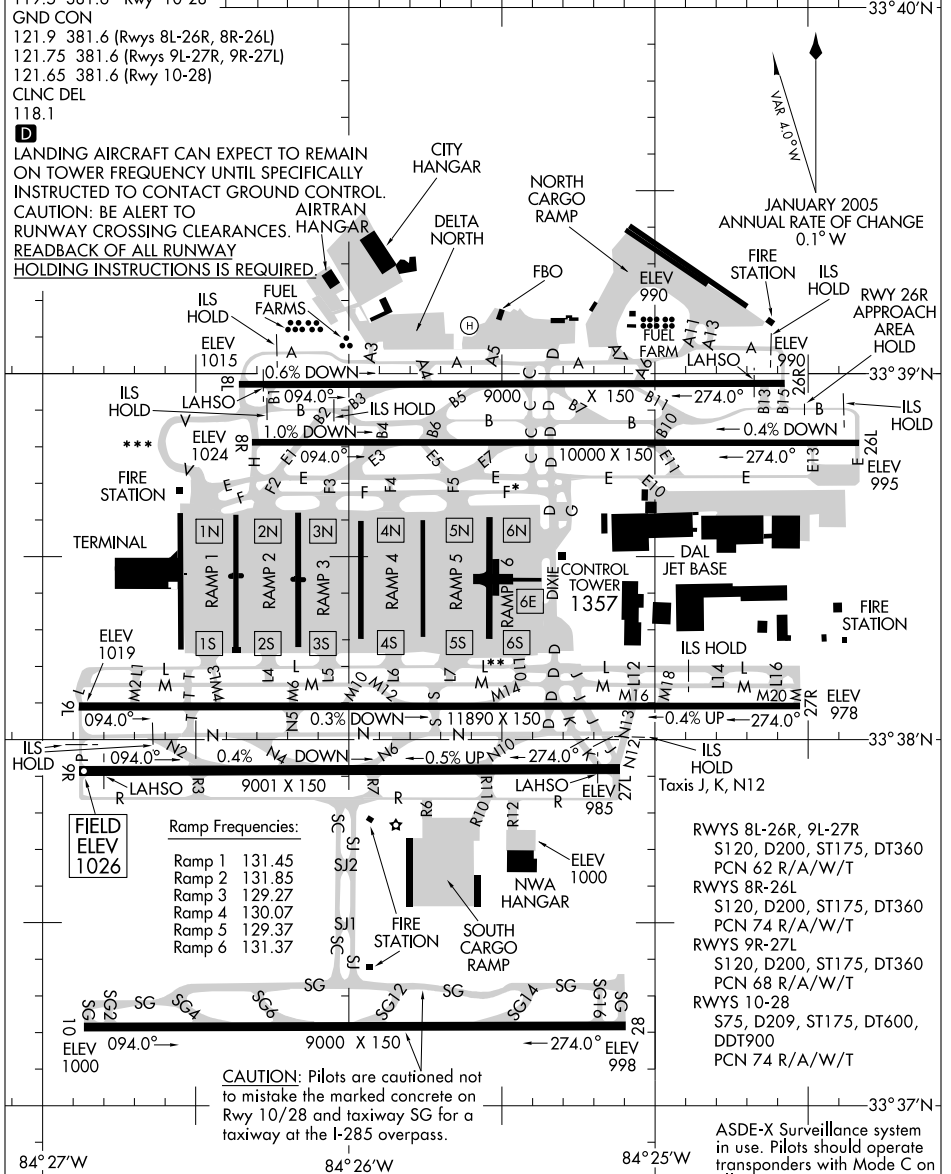
ATIS ARR 119.65
 ATIS DEP 125.55
 ATLANTA TOWER
 119.1 381.6 Rwy 8L-26R
 125.325 381.6 Rwy 8R-26L
 119.3 381.6 Rwy 9R-27L
 123.85 381.6 Rwy 9L-27R
 119.5 381.6 Rwy 10-28
 GND CON
 121.9 381.6 (Rwys 8L-26R, 8R-26L)
 121.75 381.6 (Rwys 9L-27R, 9R-27L)
 121.65 381.6 (Rwy 10-28)
 CLNC DEL
 118.1

*Group VI aircraft are restricted from using Taxiway Foxtrot east of Ramp 5 North to the west side of Taxiway Charlie.
 **Group VI aircraft are restricted from using Taxiway Lima east of Ramp 5 South to west of Ramp 6 South.
 ***Aircraft with wingspan greater than 171' are restricted from using Taxiway Victor.

D
 LANDING AIRCRAFT CAN EXPECT TO REMAIN ON TOWER FREQUENCY UNTIL SPECIFICALLY INSTRUCTED TO CONTACT GROUND CONTROL.
 CAUTION: BE ALERT TO RUNWAY CROSSING CLEARANCES.
 READBACK OF ALL RUNWAY HOLDING INSTRUCTIONS IS REQUIRED.

SE-4, 22 OCT 2009 to 19 NOV 2009

SE-4, 22 OCT 2009 to 19 NOV 2009



AIRPORT DIAGRAM

ATLANTA, GEORGIA
ATLANTA/ HARTSFIELD - JACKSON ATLANTA INTL (ATL)

ASDE-X Surveillance system in use. Pilots should operate transponders with Mode C on all twys & rwys.

CAUTION: Pilots are cautioned not to mistake the marked concrete on Rwy 10/28 and taxiway SG for a taxiway at the I-285 overpass.

RWYS 8L-26R, 9L-27R
 S120, D200, ST175, DT360
 PCN 62 R/A/W/T
 RWYS 8R-26L
 S120, D200, ST175, DT360
 PCN 74 R/A/W/T
 RWYS 9R-27L
 S120, D200, ST175, DT360
 PCN 68 R/A/W/T
 RWYS 10-28
 S75, D209, ST175, DT600,
 DDT900
 PCN 74 R/A/W/T

Ramp Frequencies:

| | |
|--------|--------|
| Ramp 1 | 131.45 |
| Ramp 2 | 131.85 |
| Ramp 3 | 129.27 |
| Ramp 4 | 130.07 |
| Ramp 5 | 129.37 |
| Ramp 6 | 131.37 |